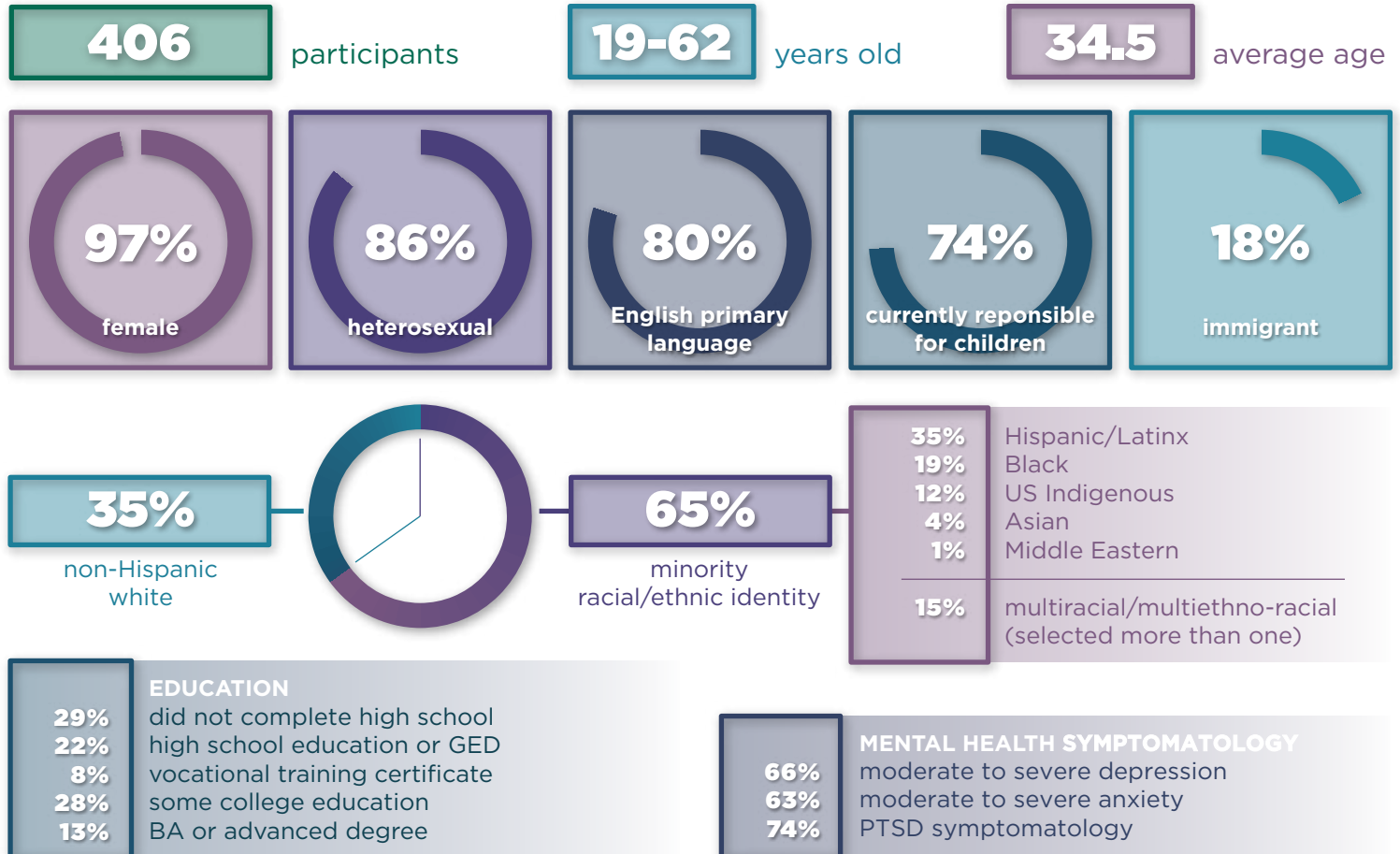




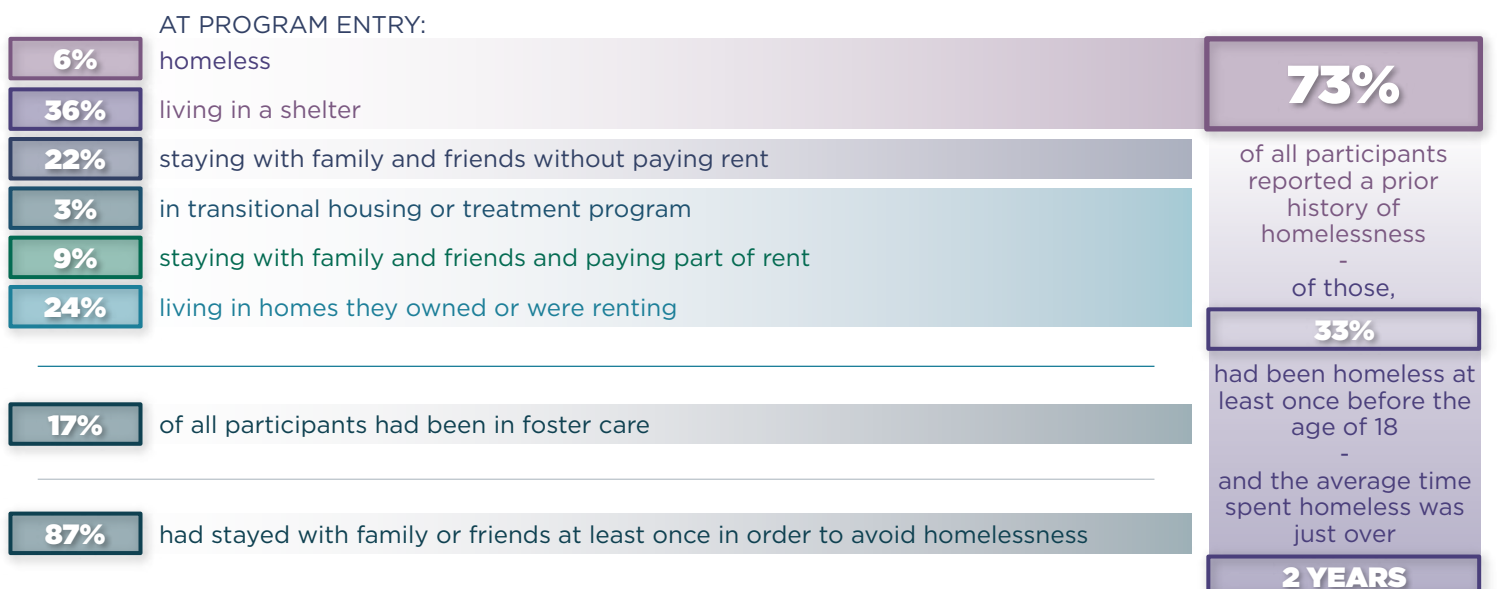
DOMESTIC VIOLENCE HOUSING FIRST DEMONSTRATION EVALUATION

Participant Socio-demographics at Program Entry | June 2020

DEMOGRAPHIC OVERVIEW



EXPERIENCES WITH HOUSING



EXPERIENCES WITH FINANCIAL INSTABILITY BEFORE ARRIVAL AT AGENCY



EXPERIENCES WITH VIOLENCE BEFORE ARRIVAL AT AGENCY

% of participants who experienced abuse in the prior six months:



Of those with children, **89%** reported perpetrators using their child(ren) against them in the last 6 months

PARTICIPANT NEEDS AND PRIORITIES AT ENTRY INTO AGENCY



The Domestic Violence Housing First (DVHF) Demonstration Evaluation is being conducted through a contract with the Office of the Assistant Secretary for Planning and Evaluation (ASPE) in the U.S. Department of Health and Human Services, with funding from the Office for Victims of Crimes in the U.S. Department of Justice. The contractor is the Washington State Coalition Against Domestic Violence and its subcontractor Michigan State University. The Bill & Melinda Gates Foundation has provided additional funding for the DVHF services and evaluation activities.