

What is Domestic Violence Housing First?

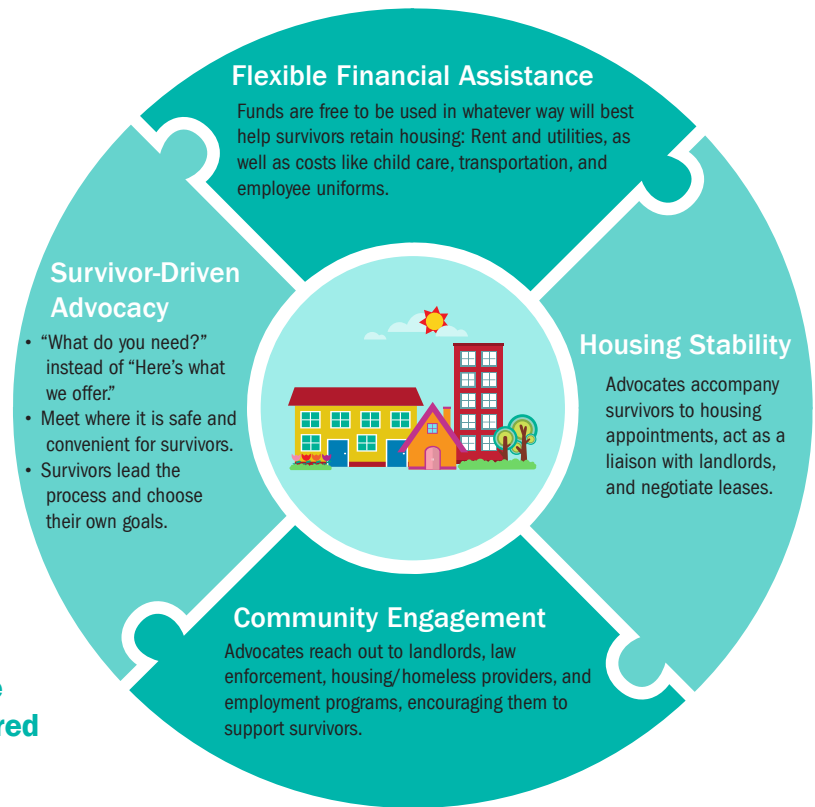


Overview

Domestic violence is a leading cause of homelessness for women and children.

The Domestic Violence Housing First approach focuses on getting survivors of domestic violence into stable housing as quickly as possible and then providing the necessary support as they rebuild their lives.

The approach's success relies on survivor-driven advocacy, flexible financial assistance, housing stability, and community engagement.



Women and children are safe, more stable, self-sufficient, and empowered to create lives free from violence.

\$40 The minimum amount it took to get a survivor into stable housing. \$1250 was the average cost.

3 It took an average of three months for survivors to find housing.

96% of survivors retained housing 18 months after entering DVHF.



Housing is no longer a reason to stay in an abusive relationship.